

# ***Marley Double Roman concrete roof tile***

*Manufactured in Gauteng and KwaZulu-Natal*



***The classic double roman tile  
with the extra-bold roll***



## The classic Double Roman with the extra-bold roll

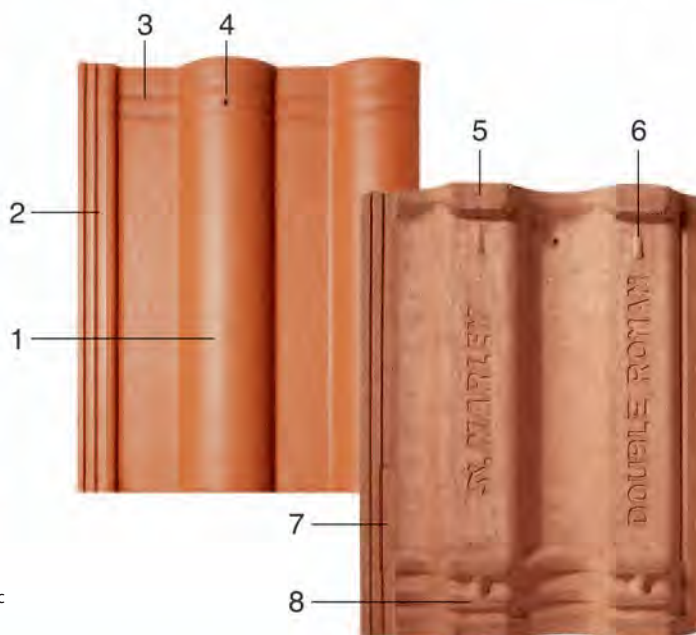
The Double Roman tile is the modern successor to the Roman clay tile. We have completely redesigned this traditional profile to the latest international standards and greatly enhanced its character and performance.

- 1. The Marley Double Roman brings stunning good looks to all roof applications.**  
The extra-bold roll creates roofs of outstanding character which perform exceedingly well at all pitches. The concealed interlocks provide a very clean, aesthetic roofline.
- 2. From our top of the range M22-coated tiles with their rich silky colours to our Antique finish, the Marley Double Roman is a universal, affordable choice for all classic and contemporary architectural styles.**

Finishes and colours: See page 6 and 7.

### Advanced aesthetic and technical features:

1. Extra bold roll.
2. Concealed side-facing interlock with precision-formed water channels to ensure maximum protection under the most adverse conditions.
3. Anti-capillary grooves.
4. Centre nail hole.
5. Reinforced batten lugs for secure fixing.
6. Batten bearers for positive location.
7. Clip housing.
8. Triple weatherbars to provide the most effective barrier against wind-driven rain and capillary action.

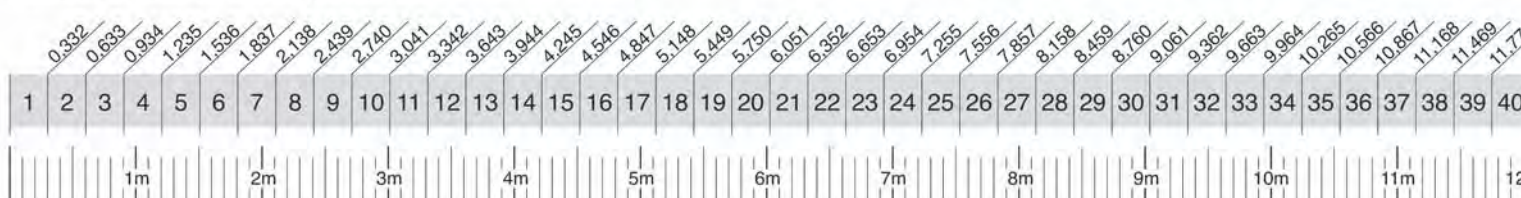


### Watertightness

Marley roof tiles' precision interlocks and weatherbars are the result of scientific research and wind-tunnel testing. These state-of-the-art features provide maximum protection against wind-driven rain and water capillary action.

### Number of tiles on the eaves length:

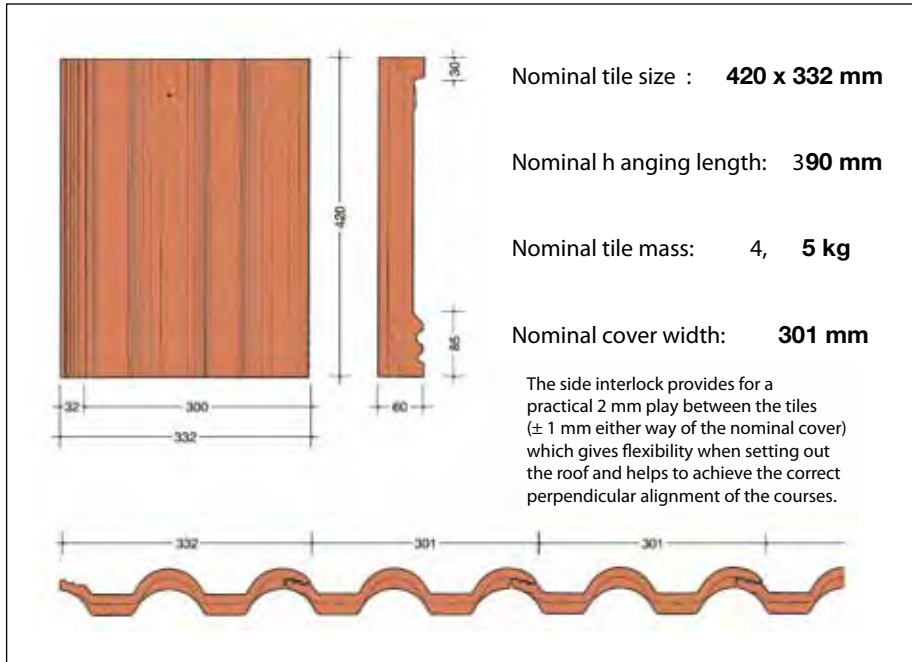
Continued on page 3 ►





Roof pitches of:

17,5° to 25° 100 mm headlap		26° and more 75 mm headlap	
Rafter length		Rafter length	
1	0,360	1	0,360
2	0,680	2	0,705
3	1,000	3	1,050
4	1,320	4	1,395
5	1,640	5	1,740
6	1,960	6	2,085
7	2,280	7	2,430
8	2,600	8	2,775
9	2,920	9	3,120
10	3,240	10	3,465
11	3,560	11	3,810
12	3,880	12	4,155
13	4,200	13	4,500
14	4,520	14	4,845
15	4,840	15	5,190
16	5,160	16	5,535
17	5,480	17	5,880
18	5,800	18	6,225
19	6,120	19	6,570
20	6,440	20	6,915
21	6,760	21	7,260
22	7,080	22	7,605
23	7,400	23	7,950
24	7,720	24	8,295
25	8,040	25	8,640
26	8,360	26	8,985
27	8,680	27	9,330
28	9,000	28	9,675
29	9,320	29	10,020
30	9,640	30	10,365
31	9,960	31	10,710
32	10,280	32	11,055
33	10,600	33	11,400
34	10,920	34	11,745
35	11,240	35	12,090
36	11,560		
37	11,880		
38	12,200		



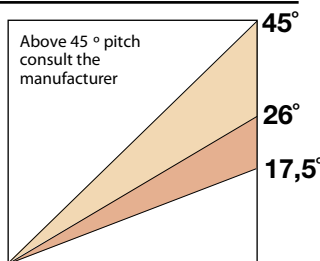
Minimum roof pitch	with 100 mm headlap	<b>17,5°</b>
	with 75 mm headlap	<b>26°</b>
Rafter/Trusses	As per structural requirements	
Rafter centres (maximum)	<b>760 mm</b> with 38 x 38 mm batten <b>900 mm</b> with 38 x 50 mm batten fixed flat <b>1 000 mm</b> with 38 x 50 mm batten on edge Note: Above 760 mm the rafter spacing can be increased only with engineer-designed trusses and with 38 x 50 mm batten of the correct grade. All structural timber must comply with S.A National Standards.	
Undertile membrane	<b>Marley high-quality Undertile Membrane is recommended in all cases.</b> Modern practice has demonstrated that the underlay is a fundamental part of a tiled roof at pitches below 26° and for pitches above 45°, and at all pitches in exposed and coastal areas.	

Tiling data at pitches of 17,5° to 25°

Minimum tile headlap	<b>100 mm</b>
Maximum batten centres	<b>320 mm</b>
Batten per m <sup>2</sup> (net length)	<b>3,13 m</b>
Tiles per m <sup>2</sup> (net)	<b>10,38</b>
Mass of tiles per m <sup>2</sup> ±	<b>46,7 kg</b>

Tiling data at pitches of 26° and above

Minimum tile headlap	<b>75 mm</b>
Maximum batten centres	<b>345 mm</b>
Batten per m <sup>2</sup> (net length)	<b>2,9 m</b>
Tiles per m <sup>2</sup> (net)	<b>9,63</b>
Mass of tiles per m <sup>2</sup> ±	<b>43,4 kg</b>



1. The minimum pitch and minimum headlap must not be reduced under any circumstance. It is always better to raise the safety factor of the roof by adding a full course of tiles and increasing the tile headlap evenly on the rafter length.
2. In exposed areas the tile headlap may be increased, but greater lap is not as effective as a steeper pitch.

Distance from top edge of first batten to outside edge of fascia board	<b>335 mm</b>
Distance from top edge of top batten to rafter apex	<b>25 mm</b>
Estimating	See Eaves and Rafter tables

All tiling and fixing to comply with SANS 10062 : 2003 Code of Practice and with Marley standard fixing specifications.

Cutting and drilling of tiles: See Health and Safety

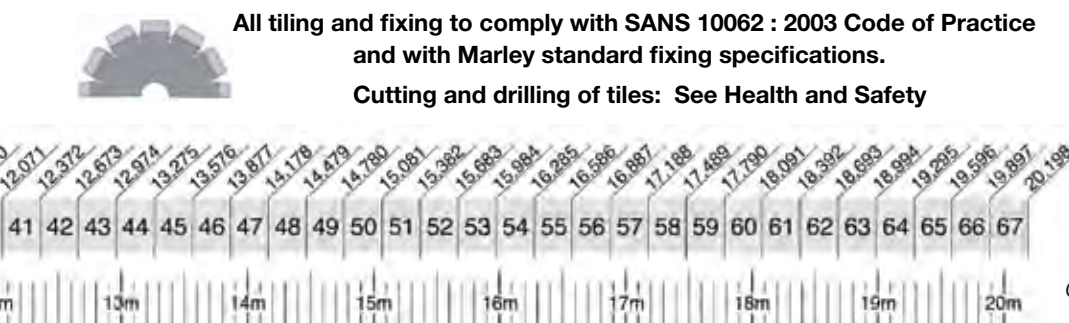
↑ Rafter Table

The Rafter Table indicates the number of courses to be allowed on the rafter length to ensure that the minimum tile headlap of 100 mm or 75 mm is obtained according to the roof pitch.

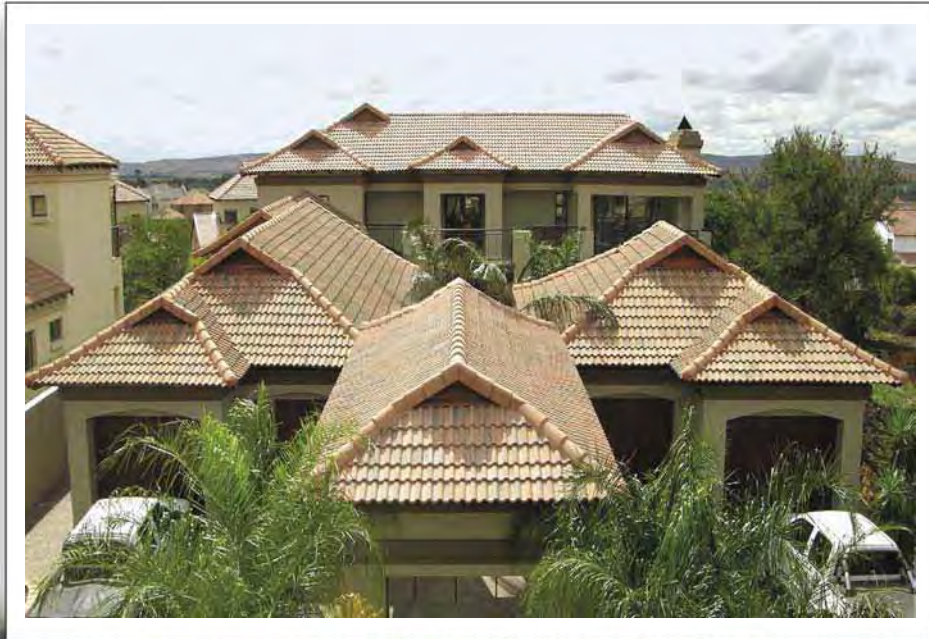
← Eaves Table

The Eaves Table shows the average linear coverage for Double Roman tiles along the eaves length. Calculations are given at lock mid-shuffle position, subject to standard manufacturing tolerances.

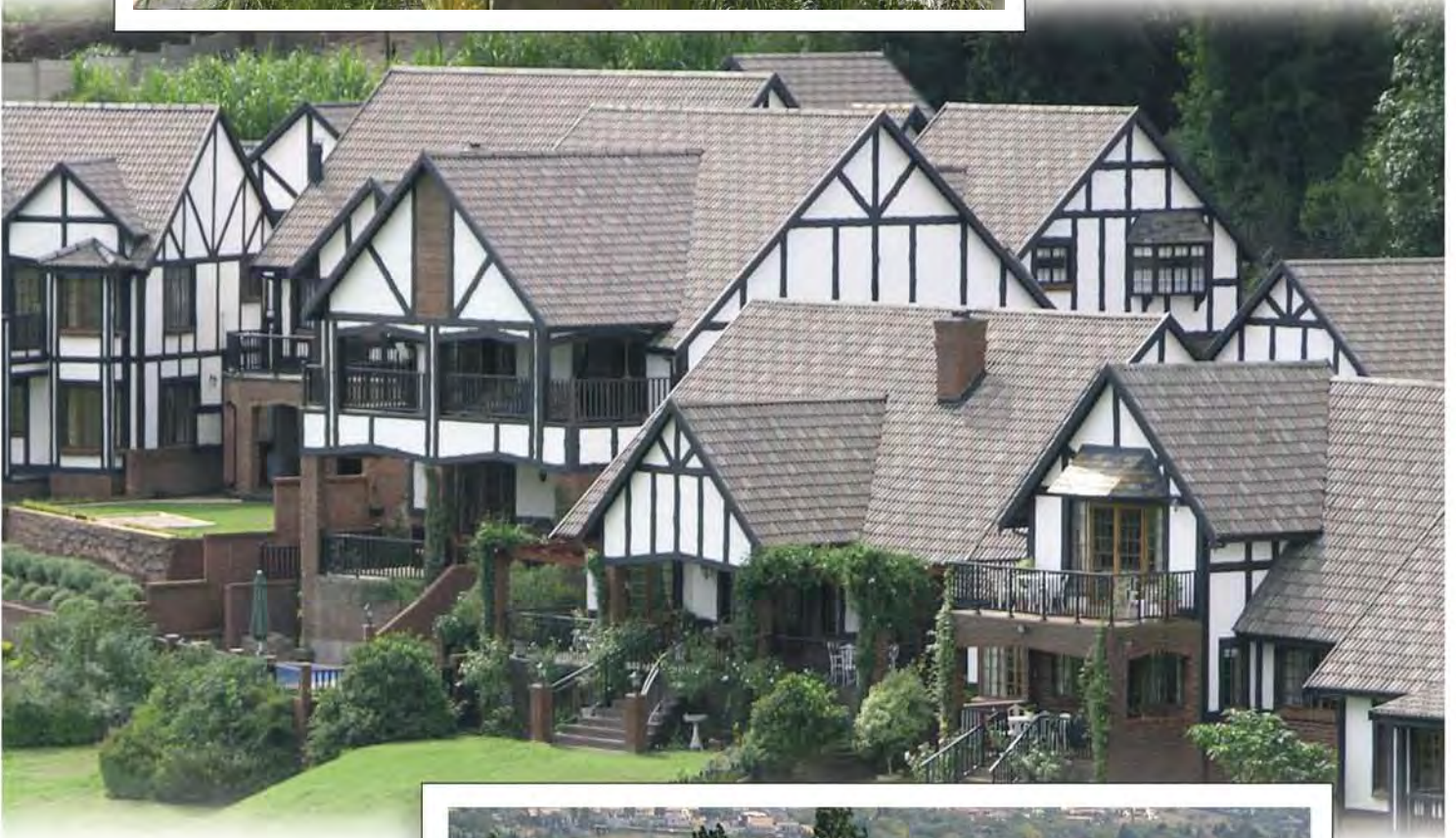
All figures are net. Wastage must be added.



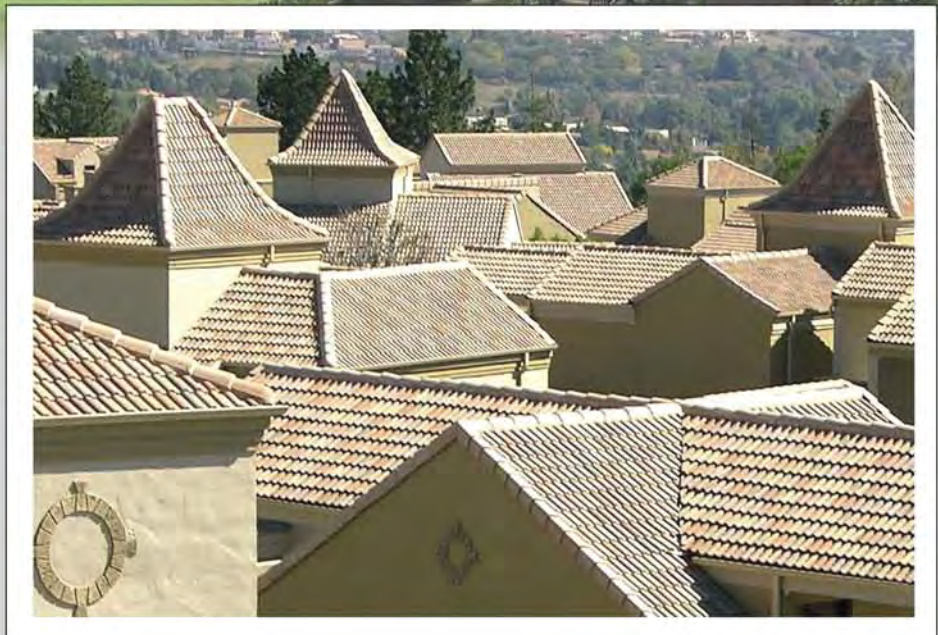




**Classic  
beauty  
and  
high  
performance**



**in  
modern  
attractive  
colours and  
finishes**



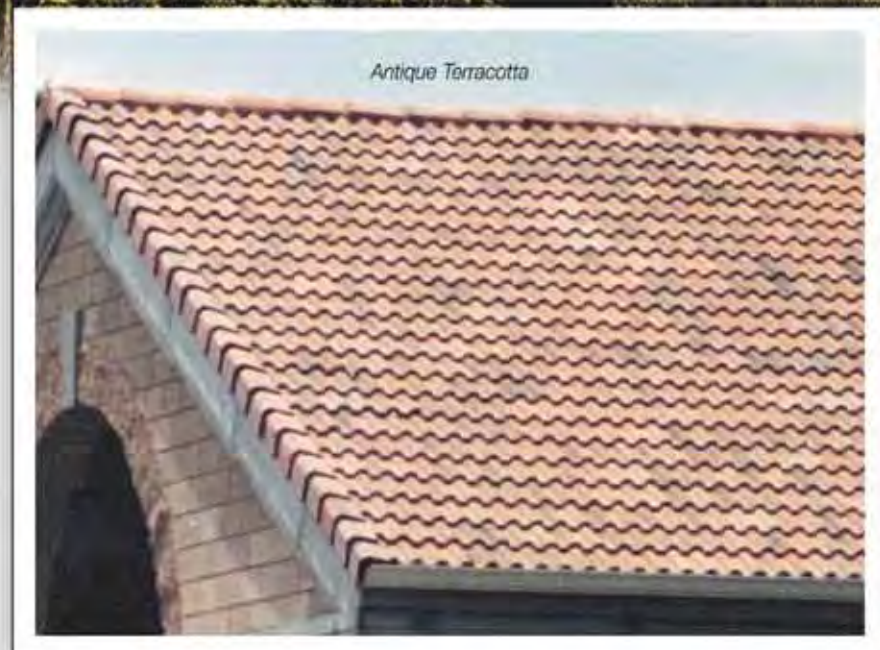




**Marley's  
'extra-bold'  
Double Roman  
concrete  
profile**



**Classic  
elegance  
and  
cost-  
effectiveness**





## Gauteng tile range



### M22<sup>®</sup>-coated

South Africa's premier concrete roof tile finish.

Guaranteed long-lasting colour uniformity on the roof.

M22 seals the surface of the tiles and promotes water-shedding.

Eliminates efflorescence. Protects against surface erosion.

Proven for more than twenty five years. More on our website.

### M22-coated



M22 Slate  
DRM2SL



M22 Brown  
DRM2BR



M22 Red  
DRM2RE



M22 Terracotta  
DRM2TC



M22 Emerald Green  
DRM2EM

### Standard



Standard Slate  
DRSTSL



Standard Brown  
DRSTSL



Standard Red  
DRSTRE



Standard Terracotta  
DRSTTC



Standard Amber  
DRSTAM

### Antique



Antique Terracotta  
DRANTC



Antique Amber  
DRAN AM



Antique Brown  
DRAN BR

Specials and corporate colours are manufactured on request, subject to minimum economical quantities.

Technical note: Due to natural variations in the raw materials and the occasional occurrence of efflorescence on concrete products, absolute colour uniformity on the roof cannot be guaranteed with Standard tiles.

Due to the limitations of colour reproduction actual samples must always be seen before ordering.

## KwaZulu-Natal tile range

### M22-coated



M22 Slate  
TDRM2 SL



M22 Brown  
TDRM2 BR



M22 Red  
TDRM2 RE

### Antique



Antique Terracotta  
TDR ANTC



Antique Amber  
TDR ANAM



M22 Terracotta  
TDRM2 TC



M22 Emerald Green  
TDRM2 EM



M22 Moreland Green  
TDRM2MO



Antique Slate  
TDR ANSL



Antique Brown  
TDR ANBR

### Standard Throughcolour



Standard Slate  
TDR ST SL



Standard Brown  
TDR ST BR



Standard Red  
TDR ST RE

### Spectrum



Spectrum Slate  
TDRSPSL



Spectrum Terracotta  
TDRSP TC



Standard Terracotta  
TDR ST TC



Standard Amber  
TDR ST AM



Granite  
TDRGT

**M22-coated:** South Africa's premier concrete roof tile finish. Guaranteed colour uniformity on the roof.

*Technical note: Due to natural variations in the raw materials and the occasional occurrence of efflorescence on concrete products, absolute colour uniformity on the roof cannot be guaranteed with Standard tiles.*

*Specials and corporate colours are manufactured on request subject to minimum economical quantities.*

*Due to the limitations of colour reproduction actual samples must always be seen before ordering.*



*MARLEY DOUBLE ROMAN — THE CLASSIC DOUBLE ROMAN WITH THE EXTRA-BOLD ROLL*

