

# Recommendations and Fixing Instructions

To secure or to fix use galvanised or stainless steel nails / staples.

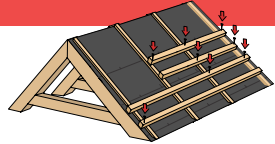
Recommended temperature of fixing - above 5°C

Recommended temperature of storing - not exceeding 35°C

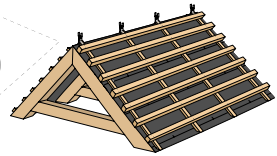
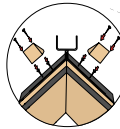
When using adhesive strips, the surface of the tile/slate should be clean, dry and free of dust and grease. The screws should be finished off with a screwdriver to make sure clamping plates are tightly secured.

## Fixing instructions:

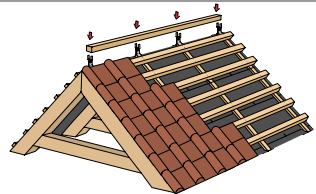
1. Lay the underlay and battens in the normal manner. If ventilation is required set back 5 - 30 mm from the ridge apex on both sides to provide an air ventilation gap. Do not fix the top tiling / slating batten at this stage.



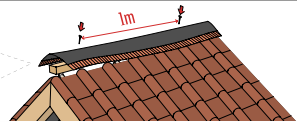
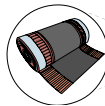
2. Using nails fix the ridge batten bracket to the rafters or trusses through holes on each side. Fit the ridge batten and secure to the ridge batten bracket.



3. Fix top tiling / slating batten in the normal manner and leave a 10 mm air gap if required. Lay and fix the roof tiles or slates in accordance with the manufacturer's fixing specifications.



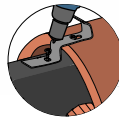
4. Roll out ventilated ridge roll along the ridge batten, secure using nails or staples at 1 metre intervals.



5. Make sure the surface of the tile or slate is clean, free of dust and dry where the corrugated edge of the ridge roll will be laid down. Peel off the protective tape from the adhesive strip on the underside of the roll and press down into the tile or slate surface. Carefully adjust the corrugated edges to the shape of the tiles / slates.



6. Ridge tile holder is applied for mounting ridge tiles to the ridge batten. It should be nailed through the pre-punched holes into ridge batten with screws. The bottom edge of the upper ridge tile fits into the hook portion of the clip. The hook portion can be easily bent onsite by pressing due to aluminum material.



We know how important it is to find practical information and to keep up with the latest development in Roofing. Visit our website or scan the QR code for more information on the latest in Roofing news, product and tips.



<https://www.facebook.com/MarleyRoofingZA>  
<https://www.linkedin.com/company/27058241>

CALL 010 600 0284  
EMAIL [info@marley.co.za](mailto:info@marley.co.za)  
OR VISIT [www.marleyroofing.co.za](http://www.marleyroofing.co.za)



# Dry-Ridge System Installation Guide



## Kit Content

- 13 x Ridge Trees
- 27 x Ridge Clips
- 1 x Compact Ridge Roll



Slate or Terracotta  
Compact Roll



Slate or Terracotta  
Ridge Clip



Ridge Tree