



Multi-surface Paint & Inspiration Guide!

Member of the
uboro
GROUP

Multi





Welcome!

Member of the
ubora
GROUP

Yes, it's true!
We are not new to paint.

Our M11 & M22 Ready-painted Roof Tile Formulations have stood up to their promise over the last few decades and are available to you, in two - easy to apply - Multi-surface Paints that will transform your home!

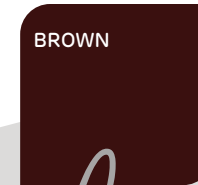
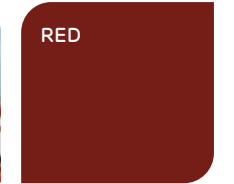
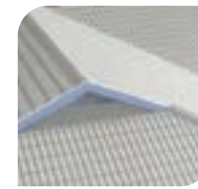
A Professional Painter?

We now offer a range of primers and waterproofing systems, as well as the capability to create bespoke colours for orders above 200L, using our in-plant colourants.

This means that our bespoke colours are less likely to fade and more affordable when compared to tinter mixing.



M11 NEW LOOK!
Same Trusted Formulation!



Multi
Paints

The only **MULTI-SURFACE** paint you'll ever need!
+ Discover our range of primers and surface preparations guide on Page 13P



#TwoPaints Multiple Applications!



| APPLICATION | CLEANING | DRYING | RECOAT | HOW MUCH |
|----------------------|----------|--------|--------|-------------------|
| | | | | |
| BRUSH, ROLLER, SPRAY | WATER | 60 MIN | 4 HRS | 7 - 8M2 PER LITRE |
| APPLICATION | CLEANING | DRYING | RECOAT | HOW MUCH |
| | | | | |
| BRUSH, ROLLER, SPRAY | WATER | 60 MIN | 4 HRS | 6 - 8M2 PER LITRE |



For Steel Tiles

Also available in these great colours!



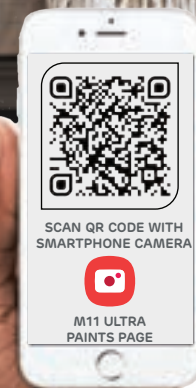
+ Interior Walls !



Silky smooth!

Marley M11 Ultra & M22 Ultima have a smooth and silky finish that is naturally dirt shedding and easy to clean!

Though we try to get it as accurate as possible...
Please note! Factors such as printing methods, light and texture may alter the perception of a colour!





#TwoPaints

Rough or Smooth
Surfaces!



| APPLICATION | CLEANING | DRYING | RECOAT | HOW MUCH |
|----------------------|----------|--------|--------|-------------------|
| | | | | |
| BRUSH, ROLLER, SPRAY | WATER | 60 MIN | 4 HRS | 7 - 8M2 PER LITRE |
| APPLICATION | CLEANING | DRYING | RECOAT | HOW MUCH |
| | | | | |
| BRUSH, ROLLER, SPRAY | WATER | 60 MIN | 4 HRS | 6 - 8M2 PER LITRE |



For Concrete
Tiles

Also available in these great colours!



+ Brick Walls !

SLATE



Use the right tool for the job!

Long Pile Rollers are the best to use on rough surfaces like face brick, because the fibres can reach into the deepest parts of the surface!

Though we try to get it as accurate as possible...
Please note! Factors such as printing methods, light and texture may alter the perception of a colour!

SCAN QR CODE WITH
SMARTPHONE CAMERA



FOR M22 ULTIMO
PAINTS PAGE



#TwoPaints Ready to spray!



| APPLICATION | CLEANING | DRYING | RECOAT | HOW MUCH |
|----------------------|----------|--------|--------|-----------------|
| | | | | |
| BRUSH, ROLLER, SPRAY | WATER | 60 MIN | 4 HRS | 7-9M2 PER LITRE |
| APPLICATION | CLEANING | DRYING | RECOAT | HOW MUCH |
| | | | | |
| BRUSH, ROLLER, SPRAY | WATER | 60 MIN | 4 HRS | 6-8M2 PER LITRE |



For IBR Sheets

Also available in these great colours!



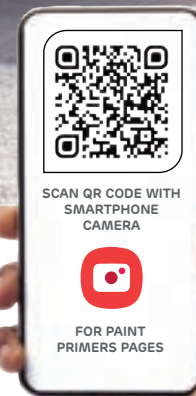
Though we try to get it as accurate as possible...
Please note! Factors such as printing methods, light and texture may alter the perception of a colour!

+ Any Steel Surfaces !



Primers = longer lasting paint systems!

Marley now offers a range of primers that promote better adhesion of paint systems to difficult surfaces, like unpainted or weathered IBR Roof Sheets!





#TwoPaints
Endless
possibilities!



| APPLICATION | CLEANING | DRYING | RECOAT | HOW MUCH |
|----------------------|----------|--------|--------|-------------------|
| | | | | |
| BRUSH, ROLLER, SPRAY | WATER | 60 MIN | 4 HRS | 7 - 9M2 PER LITRE |
| APPLICATION | CLEANING | DRYING | RECOAT | HOW MUCH |
| | | | | |
| BRUSH, ROLLER, SPRAY | WATER | 60 MIN | 4 HRS | 6 - 8M2 PER LITRE |



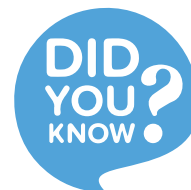
**For Scotch
Roofs**

Also available in these great colours!



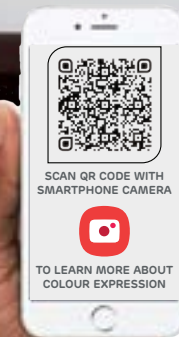
+ Dry walls!

Though we try to get it as accurate as possible...
Please note! Factors such as printing methods, light and texture may alter the perception of a colour!



The same colour can look very different from one room to the next, even different surfaces, reflections, angles and light conditions can all change the expression of a colour.

Read our blog article to learn what steps you can take to get closer to the colour you imagined!





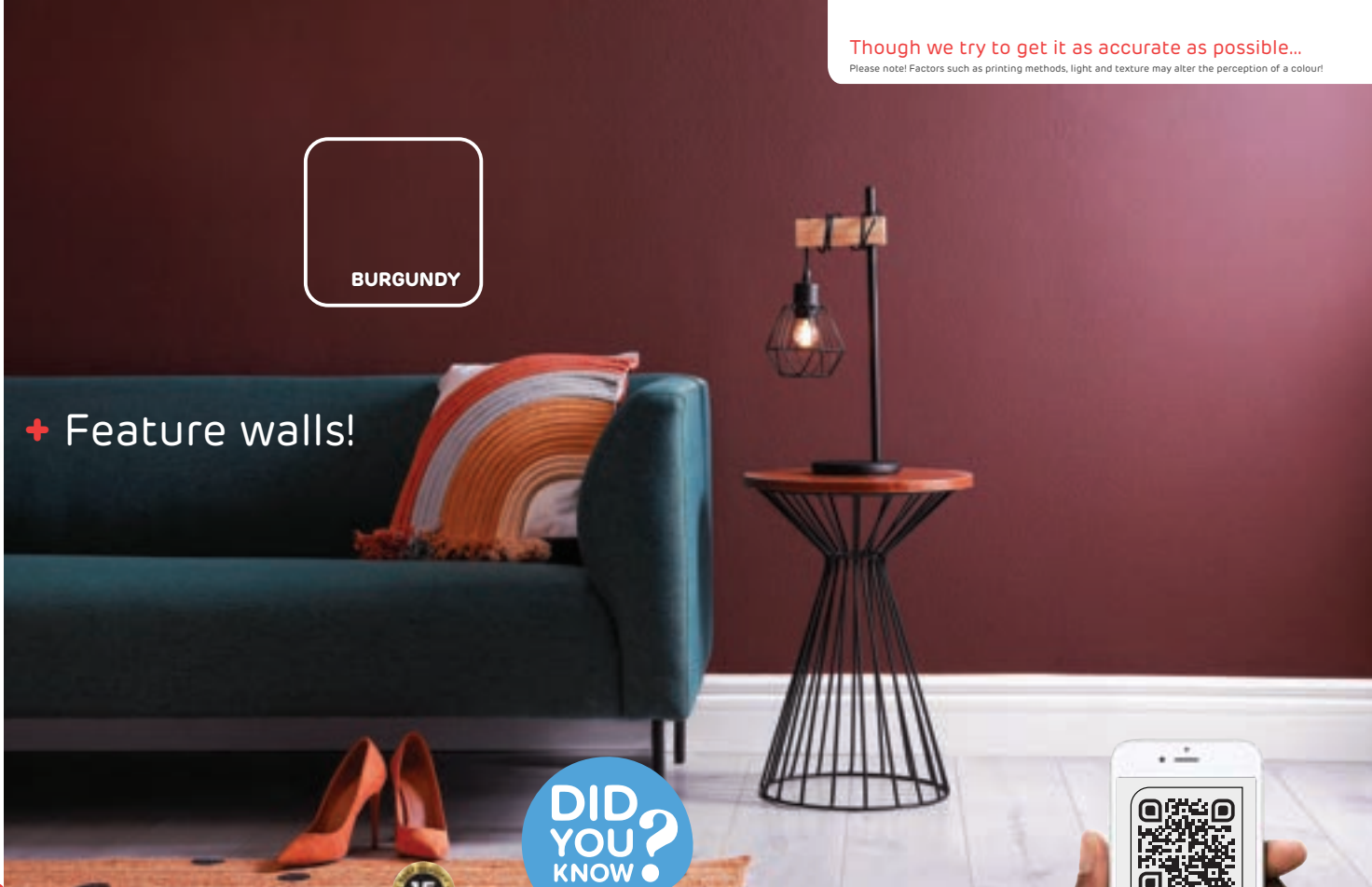
#TwoPaints
Endless
possibilities!



| APPLICATION | CLEANING | DRYING | RECOAT | HOW MUCH |
|----------------------|----------|--------|--------|-------------------|
| | | | | |
| BRUSH, ROLLER, SPRAY | WATER | 60 MIN | 4 HRS | 7 - 9M2 PER LITRE |
| APPLICATION | CLEANING | DRYING | RECOAT | HOW MUCH |
| | | | | |
| BRUSH, ROLLER, SPRAY | WATER | 60 MIN | 4 HRS | 6 - 8M2 PER LITRE |



Also available in these great colours!



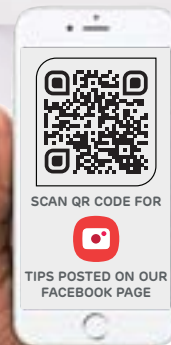
+ Feature walls!

BURGUNDY

DID YOU KNOW?

Marley M22 Ultimo is a tough paint that can be used on paving and driveways too!

Can't find it?
Ask this store to order for you!



Though we try to get it as accurate as possible...
Please note! Factors such as printing methods, light and texture may alter the perception of a colour!

Easy steps to Success!

The correct preparation & paint system application, is key to ensure your paint lives up to its promise!

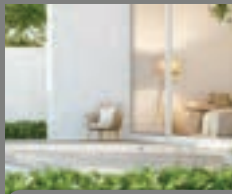
Use this table as a guide to help you prepare and paint the majority of surfaces in-and-outside your home.



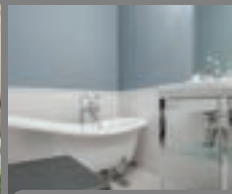
Need more help?
WhatsApp us!

+27 (0)83 345 7343

Surface



Ready-painted Int / Ext Water-based Acrylic Walls



Ready-painted Gloss & Eggshell Enamel Walls



New Raw Plastered Int / Ext Walls



New Gypsum Plastered Walls - like "Rhinolite"



New Wood



New Uncoated Galvanized Steel or Iron



Uncoated Concrete Roof Tiles



Uncoated Paving

1

Good Condition

If paint is not peeling and in good condition!

NO PRIMER REQUIRED

Though ensure surface is clean, free of dust, or any contaminants.

Ensure surface is dry!

Skip to step 3

If paint is not peeling and in good condition!

Prime with:

MARLEY UNIVERSAL UNDERCOAT

Though if surface is very glossy, first sand to matt, to improve adhesion. Further to this, ensure surface is clean, free of dust, or any contaminants.

Ensure surface is dry!

Skip to step 3

Ensure plaster is completely dry!

Brush and wipe surface down to ensure surface is free and clean of dust, debris or any contaminants.

Prime with:

MARLEY WATER-BASED PLASTER PRIMER or

MARLEY SOLVENT-BASED PLASTER PRIMER

Skip to step 3

Ensure plaster is completely dry!

Brush and wipe surface down to ensure surface is free and clean of dust, debris or any contaminants.

Prime with:

MARLEY SOLVENT-BASED PLASTER PRIMER or

MARLEY BONDING LIQUID

Skip to step 3

NO PRIMER REQUIRED

Though first sand down surface with 150-180 grit sandpaper. Sand with the grain then wipe away dust with damp cloth. Further to this, ensure surface is clean, free of dust, or any contaminants.

Ensure surface is dry!

Skip to step 3

Remove grease, oil and temporary protective coating with a quality degreaser agent and an abrasive pad. Rinse clean with water until water break-free film is achieved. Allow to dry!

Prime with:

MARLEY WATER-BASED ZINC PHOSPHATE STEEL PRIMER

Skip to step 3

NO PRIMER REQUIRED

Though surface should be dry and free of loose particles. If heavily soiled with dirt and debris, hose surface down with high pressure water jet or scrub with a hard bristle brush and water.

Allow surface to dry thoroughly!

Skip to step 3

NO PRIMER REQUIRED

Though surface should be dry and free of loose particles. If heavily soiled with dirt and debris, hose surface down with high pressure water jet or scrub with a hard bristle brush and water.

Allow surface to dry thoroughly!

Skip to step 3

2

Poor Condition

Remove all loose, flaking & bubbling paint and clean back to raw surface by scraping, sanding or washing. Wipe clean and allow to dry completely!

Spot prime over cleaned back surface with:

MARLEY WATER-BASED PLASTER PRIMER or

MARLEY SOLVENT-BASED PLASTER PRIMER

Remove all loose, flaking & bubbling paint and clean back to raw surface by scraping, sanding or washing. Wipe clean and allow to dry completely!

Spot prime over cleaned back surface with:

MARLEY WATER-BASED PLASTER PRIMER or

MARLEY SOLVENT-BASED PLASTER PRIMER

Then prime entire surface with:

MARLEY UNIVERSAL UNDERCOAT

If surface has cracks, first repair and treat as new work, as per step 1.

If walls remain permanently damp, establish source of water penetration, then repair or waterproof and allow to dry out completely!

Then treat as new work, as per step 1.

DID YOU KNOW?

Marley has a range of professional waterproofing products that can greatly improve adhesion between paints and surfaces substrates including dense impervious concrete!

For more information, please contact us!

If walls remain permanently damp, establish source of water penetration, then repair or waterproof and allow to dry out completely!

Then treat as new work, as per step 1.

If wood is rotten, replace! If wood is weathered or previously varnished or treated sand surface down until bare wood is visible and smooth.

Then treat as new work, as per step 1.

DID YOU KNOW?

Recent tests revealed that Marley M11 and M22 Paints adhesion properties make it suitable for use directly on to wood!

If metal is rusted, remove oxidation and loose rust by means of sanding or shotblasting. Use either a quality General Purpose Cleaner or Degreaser agent and an abrasive pad to clean the surface thoroughly. Rinse clean with water until water break-free film is achieved. Allow to dry!

Prime with:

MARLEY WATER-BASED ZINC PHOSPHATE STEEL PRIMER

Important! 2 to 3 coats may be necessary to ensure all rust peaks are covered!

If surface is excessively friable with loose particles, e.g., old weathered slurry or granular stone coated roof tiles, hose surface down with high pressure water jet or scrub with a hard bristle brush and water.

Allow surface to dry thoroughly!

Prime with:

MARLEY BONDING LIQUID

If surface is excessively friable with loose particles, e.g., old weathered slurry or granular stone coated, hose surface down with high pressure water jet or scrub with a hard bristle brush and water.

Allow surface to dry thoroughly!

Prime with:

MARLEY BONDING LIQUID

3

Finish

Finish with 2 X COATS:

MARLEY M11 ULTRA or

MARLEY M22 ULTIMO

Finish with 2 X COATS:

MARLEY M11 ULTRA or

MARLEY M22 ULTIMO

Finish with 2 X COATS:

MARLEY M11 ULTRA or

MARLEY M22 ULTIMO

Finish with 2 X COATS:

MARLEY M11 ULTRA or

MARLEY M22 ULTIMO

Finish with 2 X COATS:

MARLEY M11 ULTRA or

MARLEY M22 ULTIMO

Finish with 2 X COATS:

MARLEY M11 ULTRA or

MARLEY M22 ULTIMO

Finish with 2 X COATS:

MARLEY M11 ULTRA or

MARLEY M22 ULTIMO

Finish with 2 X COATS:

MARLEY M22 ULTIMO