

## PIERCED-FIX FLASHINGS & CLOSURES

Purpose made pierced-fix flashings & closures to compliment Marley Corrugated and IBR sheeting range. Manufactured from SA's most trusted steel brands.



GAUGES: 0.47mm, 0.5mm, 0.58mm

MATERIAL OPTIONS:

1. AZ150 THUNDERSTORM COLORPLUS (Safal 0.47)
2. Z200 CHARCOAL CHROMADEK (Mittal 0.5 and 0.58)

**NEED A DIFFERENT GAUGE OR MATERIAL OPTION?**

We will source whatever your requirements - subject to availability. Please contact your Marley Representative for pricing and lead times

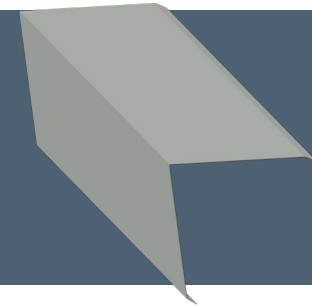


The colour on this image is indicative - please view physical sample for accurate colour expression.

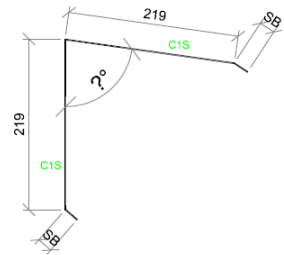
**\*SB = Stiffener bend is at 12mm included @ 15°, unless otherwise stated**

When ordering please specify gauge, material type and angle (?) to ensure correct flashing is supplied!  
E.g. Marley Apex Flashing 90 deg. Angle in Z200 CHARCOAL CHROMADEK.

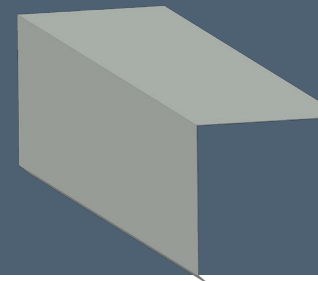
APEX  
FLASHING



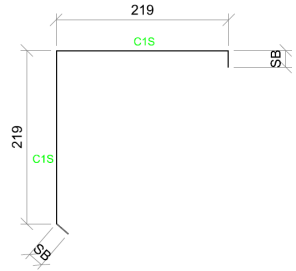
Dimensions (mm)	219 x 219
Angle	90° - roof pitch
Girth (mm)	462
Comment	Use with broad flute closures + poly closures



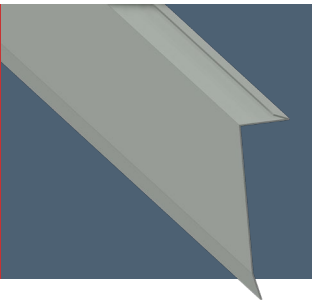
BARGE FLASHING  
GABLE TRIM



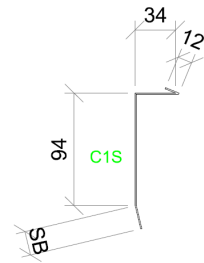
Dimensions (mm)	219 x 219
Angle	90°
Girth (mm)	462
Comment	-



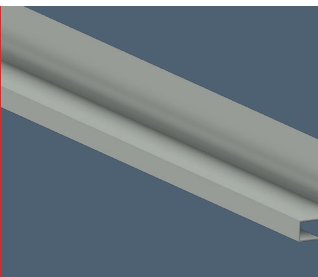
COUNTER  
FLASHING



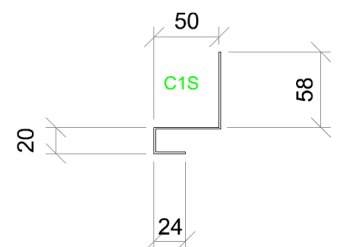
Dimensions (mm)	SB12 X 34 X 94
Angle	157.7° & 88°
Girth (mm)	152
Comment	-



DRIP  
FLASHING



Dimensions (mm)	58 X 50 X 20 24
Angle	95°
Girth (mm)	152
Comment	-



## PIERCED-FIX FLASHINGS & CLOSURES

Purpose made pierced-fix flashings & closures to compliment Marley Corrugated and IBR sheeting range. Manufactured from SA's most trusted steel brands.



GAUGES: 0.47mm, 0.5mm, 0.58mm

MATERIAL OPTIONS:

1. AZ150 THUNDERSTORM COLORPLUS (Safal 0.47)
2. Z200 CHARCOAL CHROMADEK (Mittal 0.5 and 0.58)

**NEED A DIFFERENT GAUGE OR MATERIAL OPTION?**

We will source whatever your requirements - subject to availability. Please contact your Marley Representative for pricing and lead times

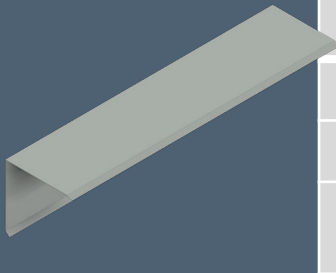


The colour on this image is indicative - please view physical sample for accurate colour expression.

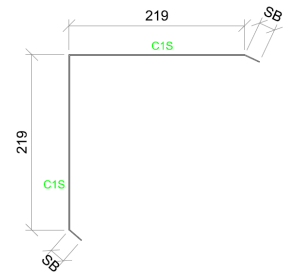
**\*SB = Stiffner bend is at 12mm included @ 15°, unless otherwise stated**

When ordering please specify gauge, material type and angle (?) to ensure correct flashing is supplied!  
E.g. Marley Apex Flashing 90 deg. Angle in Z200 CHARCOAL CHROMADEK.

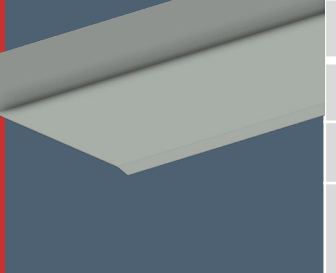
EXTERNAL CORNER



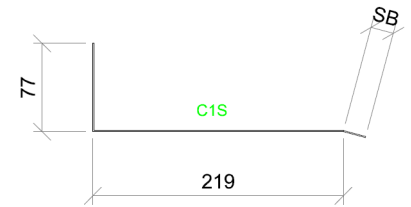
Dimensions (mm)	219 x 219
Angle	90°
Girth (mm)	462
Comment	



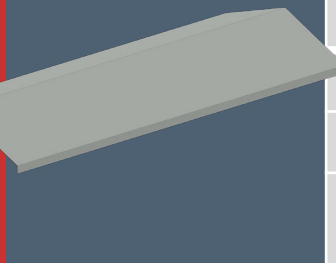
HEADWALL FLASHING



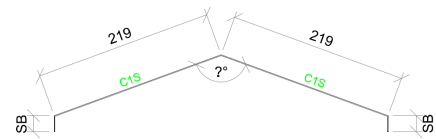
Dimensions (mm)	77 x 219
Angle	Calculation: 90° + Roof Pitch
Girth (mm)	308
Comment	-



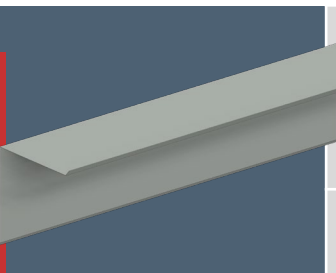
HIP CAP



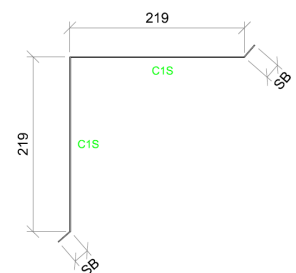
Dimensions (mm)	219 X 219
Angle	Calculation: 180° - (1.5 X Roof Pitch)
Girth (mm)	462
Comment	Use with blank closures notched + poly blocks



INTERNAL CORNER



Dimensions (mm)	219 X 219
Angle	90°
Girth (mm)	462
Comment	-



## PIERCED-FIX FLASHINGS & CLOSURES

Purpose made pierced-fix flashings & closures to compliment Marley Corrugated and IBR sheeting range. Manufactured from SA's most trusted steel brands.



GAUGES: 0.47mm, 0.5mm, 0.58mm

MATERIAL OPTIONS:

1. AZ150 THUNDERSTORM COLORPLUS (Safal 0.47)
2. Z200 CHARCOAL CHROMADEK (Mittal 0.5 and 0.58)

**NEED A DIFFERENT GAUGE OR MATERIAL OPTION?**

We will source whatever your requirements - subject to availability. Please contact your Marley Representative for pricing and lead times

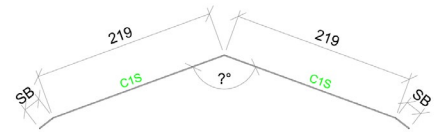


The colour on this image is indicative – please view physical sample for accurate colour expression.

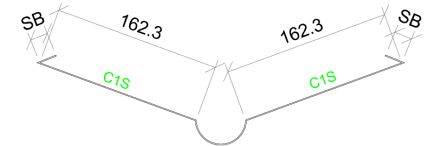
**\*SB = Stiffner bend is at 12mm included @ 15°, unless otherwise stated**

When ordering please specify gauge, material type and angle (?) to ensure correct flashing is supplied!  
E.g. Marley Apex Flashing 90 deg. Angle in Z200 CHARCOAL CHROMADEK.

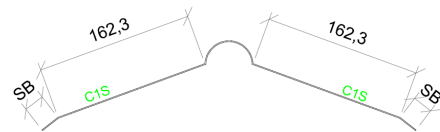
<b>RIDGE FLASHING</b>	<b>Dimensions (mm)</b>	<b>219 x 219</b>
	Angle	Calculation: $180^\circ - (2 \times \text{Roof Pitch})$
	Girth (mm)	<b>462</b>
	Comment	Use with broad flute closures + poly closures



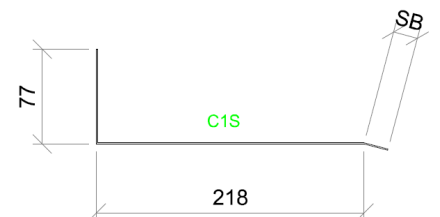
<b>ROLL TOP VALLEY FLASHING</b>	<b>Dimensions (mm)</b>	<b>162.35 X 162.35</b>
	Angle	140° Standard
	Girth (mm)	<b>462</b>
	Comment	Stiffner bend = 15mm



<b>ROLL TOP RIDGE</b>	<b>Dimensions (mm)</b>	<b>162.35 X 162.35</b>
	Angle	140° Standard
	Girth (mm)	<b>462</b>
	Comment	Use with broad flute closures + poly closures Stiffner bend = 15mm



<b>SIDEWALL FLASHING</b>	<b>Dimensions (mm)</b>	<b>77 X 218 AND 63 X 232</b>
	Angle	90°
	Girth (mm)	<b>307</b>
	Comment	-



## PIERCED-FIX FLASHINGS & CLOSURES

Purpose made pierced-fix flashings & closures to compliment Marley Corrugated and IBR sheeting range. Manufactured from SA's most trusted steel brands.



GAUGES: 0.47mm, 0.5mm, 0.58mm

MATERIAL OPTIONS:

1. AZ150 THUNDERSTORM COLORPLUS (Safal 0.47)
2. Z200 CHARCOAL CHROMADEK (Mittal 0.5 and 0.58)

**NEED A DIFFERENT GAUGE OR MATERIAL OPTION?**

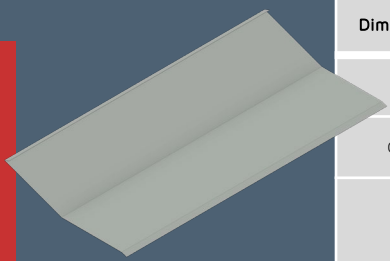
We will source whatever your requirements - subject to availability. Please contact your Marley Representative for pricing and lead times

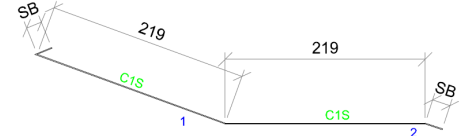


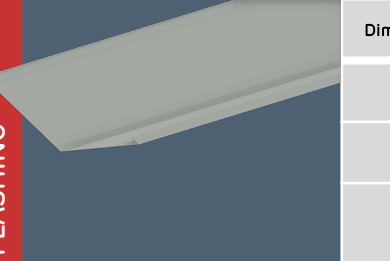
The colour on this image is indicative – please view physical sample for accurate colour expression.

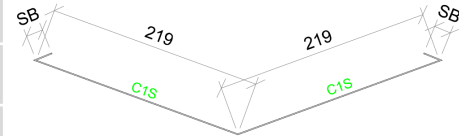
**\*SB = Stiffner bend is at 12mm included @ 15°, unless otherwise stated**

When ordering please specify gauge, material type and angle (?) to ensure correct flashing is supplied!  
E.g. Marley Apex Flashing 90 deg. Angle in Z200 CHARCOAL CHROMADEK.

<b>UNDER OVER FLASHING</b>		Dimensions (mm)	219 x 219
		Angle	Calculation: 180° - Pitch 1 & 2
		Girth (mm)	462
		Comment	-



<b>VALLEY FLASHING</b>		Dimensions (mm)	219 X 219
		Angle	140°
		Girth (mm)	462
		Comment	Stiffner bend at 158° angle



### DIMENSIONAL TOLERANCES

Length tolerance of -0mm to +10mm and width tolerance of +-5mm is allowed for straight sheets only.

### IMPORTANT NOTE ON FASTNERS & HOLES MADE

Ensure that the correct class of fasteners are used for the application and life expectancy of the roofing and cladding material. Make sure fasteners are washed and inspected for signs of corrosion. Replace if they show signs of failure and rust. Fasteners and other holes made should be properly sealed to prevent moisture ingress that could accelerate corrosion.

### IMPORTANT NOTE ON MATERIAL COMPATIBILITY

In all cases where other metal and alloy materials may have contact with Marley Corrugated Sheet, the use of an isolation tape, that is placed in between these two surfaces, is recommended to prevent bimetallic corrosion. Supporting structural members should also be coated to avoid problems with underside condensation. If in doubt, please refer to the respective Mittal and Safal Metal Technical Datasheets.

### FASTNING & LAPPING

Longitudinal flashings must be fastened at 500mm centres. For roofing applications, flashings must be lapped at a minimum of 150mm and at 100mm for side cladding. Flashings laps must be sealed with a suitable butyl product or neutral cure Silicone.

SB = Stiffner bend is 12mm included at 15°, unless otherwise stated.

### IMPORTANT NOTES!

At regular intervals, during and after installation, the roof must be kept clean and free of all swarf, pop rivets and unused fasteners or any other debris that could increase the risk of damage, corrosion and discolouration.

Marley Flashings & Closures must be stored away from any risks that could cause damage to the sheets, such as building operations, contact with cement, dust, lime and abrasive dust. Sheets must be well supported, clear of the ground and protected by a well-ventilated cover.

*Marley Roofing cannot accept liability for scratches, corrosion or other damage to the material sustained during transport to, or storage at the building site, as well as during and after installation.*