

Data Sheet: C1.5

General Warranty and Roof Claim Procedure

CHROMADEK[®] - Colour Coated Material for Roofing and Cladding

Pre-painted Hot-Dip Galvanised Steel Sheet

*This warranty applies to the building or residence subject to traceability. All invoices need to state "Chromadek[®]" in order to validate the warranty. Any incorrect information including the location of the installed roof supplied as part of the warranty application/confirmation or related invalidates the warranty. **In the event that the warranty application exceeds a period of 1 year, after the date of manufacture, ArcelorMittal reserves the right to revoke and nullify any warranties issued.***

This warranty finds application in so far as all Chromadek[®] products are concerned unless specific distinction is drawn between Chromadek[®] and Chromadek[®] ULTIM in terms hereof or where the context so requires. In the case where Chromadek[®] ULTIM is used distinction must be made between Chromadek[®] and Chromadek[®] ULTIM (points 4.1 & 4.2 contained in the warranty).

ArcelorMittal South Africa Limited warrants that the Chromadek[®] and Chromadek[®] ULTIM product will be manufactured from prime material and will have a functional life prior to perforation by weathering in the natural elements for a minimum of 10 years, in accordance to the corresponding regions as advised in Data Sheet C1.4, from the date of supply.

The paint system, which is supplied by ArcelorMittal South Africa Limited, on Galvanised steel sheets, will meet the following exterior durability standards:

1. Not chalk in excess of the ASTM D659 No 6 rate for a period of 5 years from the date of shipment.
2. Not fade more than 10 units for a period of 10 years depending on colour. (Refer to Data Sheet C1.4, Fig 3, Expected Exterior Colour Retention Performance).
3. Not check, peel, flake or chip for a period of 10 years.

The primary function of profiled steel roofing and cladding is to create a weather tight envelope. This involves fixing sheets to overlap at sides and ends and resist the entry of rainwater under all predictable weather conditions.

For further information, contact:

ArcelorMittal South Africa Limited, PO Box 2, Vanderbijlpark 1900.

E-mail address: chromadek@arcelormittal.com

Care has been taken to ensure that the information in this data sheet is accurate. ArcelorMittal South Africa Limited does not, however, assume responsibility for any inaccuracies or misinterpretations of this data. We are continuously engaged in product development and revised data sheets will be issued from time to time. Please ensure that you have the most recent issue. **Effective date: August 2021**

The ArcelorMittal South Africa products when used for building applications is coated with specific corrosion resistant materials designed to provide optimum corrosion performance in conjunction with the correct selection, design, storage, installation practice and ongoing maintenance procedures. Reference should be made to Specification SABS 0237:1991 Code of practice for Roof and Side Cladding.

This Chromadek® warranty is subject to the following specific terms and conditions:

1. ArcelorMittal South Africa delivers Chromadek® in coils and ensures that material reaches the profiler's premises in prime condition. Any damage to the material sustained during profiling, transport or storage, erection or subsequent to erection, is not covered by the warranty.
2. Installation of Chromadek® is greater than five kilometres (5 km) from either marine or heavy industrial environments.
3. The Chromadek® ULTIM product is installed at a distance greater than 400m from either the marine HWM (High Water Mark) or heavy industrial regions/environments.
4. Chromadek® is not recommended for use within five kilometers of either Marine or Heavy Industrial Environments while Chromadek ULTIM® is not recommended for use within 400m of either Marine or Heavy Industrial Environments and therefore no warranty will be issued should Chromadek® and Chromadek® ULTIM be used contrary to the applicable advised distances as per points 2 & 3 above.
5. The profiler's published fixing recommendations.
6. The Chromadek® material, as supplied, must not be scratched, or damaged in any way, or coated with an incompatible material.
7. The product has an official ArcelorMittal South Africa Chromadek® brand marking.
8. Final application of the material must conform to the material grade specification.
9. All fasteners used for fixing Chromadek® to be in accordance with AS 3566 as per Correct Class the minimum being Class 2 - 3 defined by regional suitability.
(NOTE: ensure correct class of fastener applied in MARINE and INDUSTRIAL APPLICATIONS)
10. Sheltered areas, or areas not normally washed by rain exposure must be cleaned on a regular six-monthly basis.
11. Corrosion perforation, partly or wholly due to the following causes, is not covered by the warranty.
 - 11.1 Mechanical, chemical or other damage sustained during handling, storage, transport, erection, or subsequent to erection. This includes swarf embedded into the painted surfaces of the roof sheeting originating from cutting the roof sheeting after despatched by ArcelorMittal.

For further information, contact:

ArcelorMittal South Africa Limited, PO Box 2, Vanderbijlpark 1900.

E-mail address: chromadek@arcelormittal.com

Care has been taken to ensure that the information in this data sheet is accurate. ArcelorMittal South Africa Limited does not, however, assume responsibility for any inaccuracies or misinterpretations of this data. We are continuously engaged in product development and revised data sheets will be issued from time to time. Please ensure that you have the most recent issue. **Effective date: August 2021**

- 11.2 Areas in direct contact with lead or copper, or subject to water run-off from copper bearing materials and pipes.
- 11.3 Failure to remove debris and/or failure to provide free drainage of water.
- 11.4 Corrosion caused by entrapment of water as a result of inadequate pitch or sealing-off practices
- 11.5 Cladding in contact with soil or other moisture retaining substances
- 11.6 Sheltered areas, or areas not normally washed by rain where additional protection is required by either, a paint coating, protective ceiling or other means of underlay.
- 11.7 Failure caused by fumes or corrosive by-products emanating from nearby factories or power stations.
- 11.8 Any deliberate or negligent act by the purchaser or any person or persons whatsoever.
- 11.9 Acts of God or vis major.

For avoidance of doubt, it is specifically recorded that ArcelorMittal South Africa Limited is not obliged to honour this warranty in the event of non – compliance with the use or application of Chromadek® and Chromadek® ULTIM

12. Discharge of any liability by ArcelorMittal South Africa Limited of its obligations herein, shall be done on a full and final basis of any claims against the company and the receiver of such performance shall not be entitled to any further claims herein against ArcelorMittal South Africa Limited.

13. Solar panel installation considerations:

Careful consideration should be applied to the consideration of the roof design and location taking into account corrosion prevention and clean roof surfaces free from trapped debris at all times.

In addition to the above points, corrosion prevention related to solar panel installation on a Chromadek® / Chromadek® ULTIM roof needs to take the following into account, see details in datasheet C1.4 & SANS 10237.

13.1 Compatibility of the solar panel fasteners and fixtures used in conjunction with the galvanised (zinc coated) Chromadek® substrate (see table 5 datasheet C1.4).

13.2 Effects of Galvanic corrosion:

Galvanic corrosion i.e., corrosion resulting from the coupling of dissimilar incompatible metals, can be prevented by consulting SANS 10237 guidelines on metal compatibility and coupling by selecting the correct compatible fastener and fixture.

Galvanic corrosion will not occur if:

- there is a non-conductive barrier between the coupled metals
- any electrolyte (liquid/water) is not in contact with the coupled metals

13.3 Staining and damage of Chromadek® / Chromadek® ULTIM surface: Table 5 & 6 in datasheet C1.4 advise that a solar panel installation fitted to a Chromadek® / Chromadek® ULTIM roof needs to ensure the following conditions are avoided:

- fluid emanating from corrosive chemicals of any kind
- run off from piping
- deposits or heavy metal particles such as iron, lead and copper or alkali
- contact with corrosive products such as ash, cement dust or animal excrement wet/impregnated timber, soil and wet materials retaining moisture

For further information, contact:

ArcelorMittal South Africa Limited, PO Box 2, Vanderbijlpark 1900.

E-mail address: chromadek@arcelormittal.com

Care has been taken to ensure that the information in this data sheet is accurate. ArcelorMittal South Africa Limited does not, however, assume responsibility for any inaccuracies or misinterpretations of this data. We are continuously engaged in product development and revised data sheets will be issued from time to time. Please ensure that you have the most recent issue. **Effective date: August 2021**

13.4 Once a solar panel system is installed onto a Chromadek® / Chromadek® ULTIM roof effective maintenance starts with regular (6 monthly) inspections to determine:

- water stagnation due to entrapment of dust, leaves etc.
- conditions outlined in 13.1 & 13.3 are maintained.

14. ArcelorMittal South Africa's liability with regards to either replacement material, caused by the failure of the Galvanised substrate or repainting due to failure of the paint coating (colour and gloss) is in accordance with a sliding scale and the roof owner will not carry any liability during the first 10 years should the above terms and conditions be met.

15. No liability shall be accepted for any consequential loss or damages attributable to the failure.

Chromadek® roof claim procedure

ArcelorMittal South Africa: Claim procedure for premature paint fading or roof defects

ArcelorMittal South Africa will investigate **all valid complaints** of premature paint fading or other roof defects in accordance with the conditions given in the warranty and Data Sheet C1.4 as published on the website, www.arcelormittalsa.com

It is important for users of Chromadek® to note, that when a suspected premature fading problem or roof defect is detected, the correct procedure must be followed in order to raise a valid claim with ArcelorMittal South Africa. Failure to do so will disqualify a claim by ArcelorMittal South Africa.

ArcelorMittal South Africa will not investigate a complaint without firstly determining that the sheeting was produced by ArcelorMittal South Africa. Therefore, a supplier's invoice is insufficient because although they may specify Chromadek® on the invoice, it has sometimes been determined that the material is not Chromadek® produced by ArcelorMittal South Africa but a substitute imported or local imitation.

Claims for paint fading or roof defects should also be raised against the contractor/supplier of the Chromadek® sheeting, who will in turn refer the claim to ArcelorMittal South Africa.

ArcelorMittal South Africa cannot take responsibility for the manner in which the processor/contractor/builder handles the material because damage may occur as a result of incorrect processing or storage and as a result this will invalidate the ArcelorMittal South Africa warranty.

Should the users of Chromadek® be unsuccessful in raising a claim via their builder, they may raise a claim directly with ArcelorMittal South Africa, but only if ArcelorMittal South Africa's branding detail is supplied. This may allow ArcelorMittal South Africa to identify the product prior to the official complaint being received.

ArcelorMittal South Africa's Chromadek® is branded on the underside, along the length of the sheet, approximately 140mm in from the edge at approximately 900mm intervals along the length of the coil before profiling, with a dot-matrix printer. Inspection of the roofing sheets should be conducted under the eaves or on the inside of the ceiling in order to identify the coil number because sometimes the branding is covered by the overlap. The ArcelorMittal South Africa production number starts with the letters KQ or KP and is

For further information, contact:

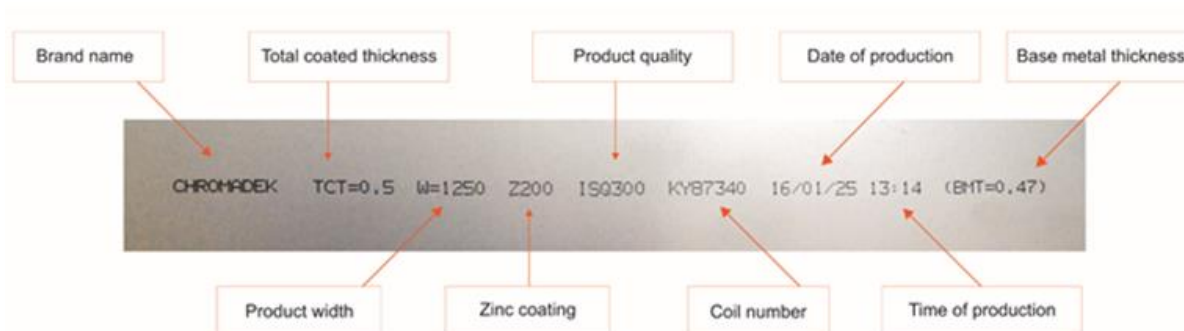
ArcelorMittal South Africa Limited, PO Box 2, Vanderbijlpark 1900.

E-mail address: chromadek@arcelormittal.com

Care has been taken to ensure that the information in this data sheet is accurate. ArcelorMittal South Africa Limited does not, however, assume responsibility for any inaccuracies or misinterpretations of this data. We are continuously engaged in product development and revised data sheets will be issued from time to time. Please ensure that you have the most recent issue. **Effective date: August 2021**

then followed by a 5-digit code. This number enables ArcelorMittal South Africa to retrace the coil through the manufacturing processes.

Example of Chromadek® branding below:



After the users of Chromadek® have located ArcelorMittal South Africa's coil number, a claim may be raised on ArcelorMittal South Africa by supplying the following information, via e-mail:

- Lot or Erven number
- Street address
- Home owner's full names & surname.
(If home is registered in both partner's name, please indicate and supply partner's full name and surname.)
- Home owner's contact details:
Home telephone number
Cell phone number
E-mail address
- Indicate if 1st or successive home owner (for statistical purposes)
- Roof erection date: Approximate month and year also, if possible, documentary proof of this date

Claims may be directed to your relevant Account Manager.

Upon receipt of a complaint ArcelorMittal South Africa will endeavor to investigate the claim within two (2) months or earlier depending on geographical location within South Africa. Results of the roof inspection will be forwarded to either the processor or home owner within one month after completion of the investigation.

For further information, contact:

ArcelorMittal South Africa Limited, PO Box 2, Vanderbijlpark 1900.

E-mail address: chromadek@arcelormittal.com

Care has been taken to ensure that the information in this data sheet is accurate. ArcelorMittal South Africa Limited does not, however, assume responsibility for any inaccuracies or misinterpretations of this data. We are continuously engaged in product development and revised data sheets will be issued from time to time. Please ensure that you have the most recent issue. **Effective date: August 2021**